



WEBFOOTER EXTRA

January 2014

HISTORIC ST. JOHNS



WEBFOOTERS POST CARD CLUB

PO Box 17240
Portland OR 97217-0240



www.thewebfooters.com

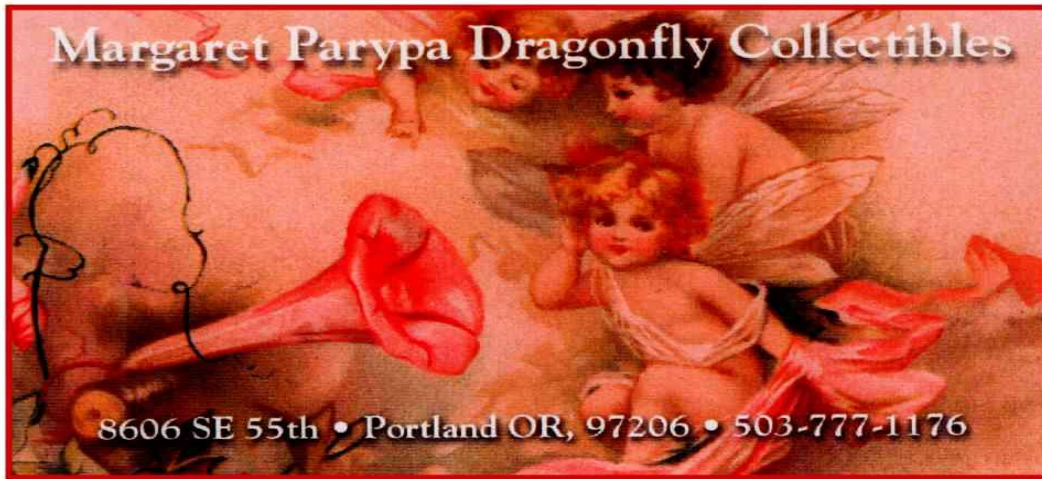


In this issue

- ◆ Historic St. Johns – Gateway to the Portland Harbor – see page 4.

Located at:

FARMHOUSE ANTIQUES



8028 SE 13th Avenue in Historic Sellwood 503-232-6757

Tuesday thru Sunday: 11 to 5

(paid advertisement)

**THANKS TO OUR ADVERTISERS FOR THEIR
SUPPORT WHICH HELPS OFFSET OUR EXPENSES**

34th Annual
WEBFOOTERS POST CARD CLUB
ANTIQUE PAPER SHOW & SALE
April 26-27, 2014

KLIEVER ARMORY
10000 NE 33RD DRIVE
PORTLAND OREGON

Free Admission - Free Parking www.thewebfooters.com

Portland Railway Company streetcar near 16th & Thurman streets circa 1915.



NORTHWEST COLLECTIBLES
PRESENTS

The Largest Antique Paper Shows in the Northwest

**The Greater Portland
Postcard Stamp and Antique Paper
Show**

February 22-23, 2014

**Lloyd Center Double Tree Hotel Annex
1000 NE Multnomah Street
Portland, Oregon**

Old Postcards, Photographs, Stereo View Cards, Books, Stamps,
Valentines, Matchbooks, Magazines, Prints,
Maps, Trade Cards, Posters & Much, Much More!

ADMISSION: \$1

Show Hours:

Saturday: 10 AM – 6 PM

Sunday: 10 AM – 4 PM

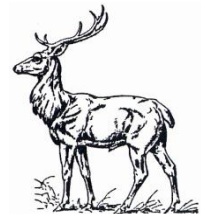
Upcoming Shows in Portland, Oregon:

June 21 - 22, 2014

October 18 - 19, 2014

For Information:

Terry Weis
601 NW 72nd Circle
Vancouver, WA 98665-8462
503-679-4755



www.portlandpapershows.com

FREE APPRAISALS

FREE ADMISSION WITH THIS AD
(paid advertisement)

HISTORIC ST. JOHNS

GATEWAY TO THE PORTLAND HARBOR



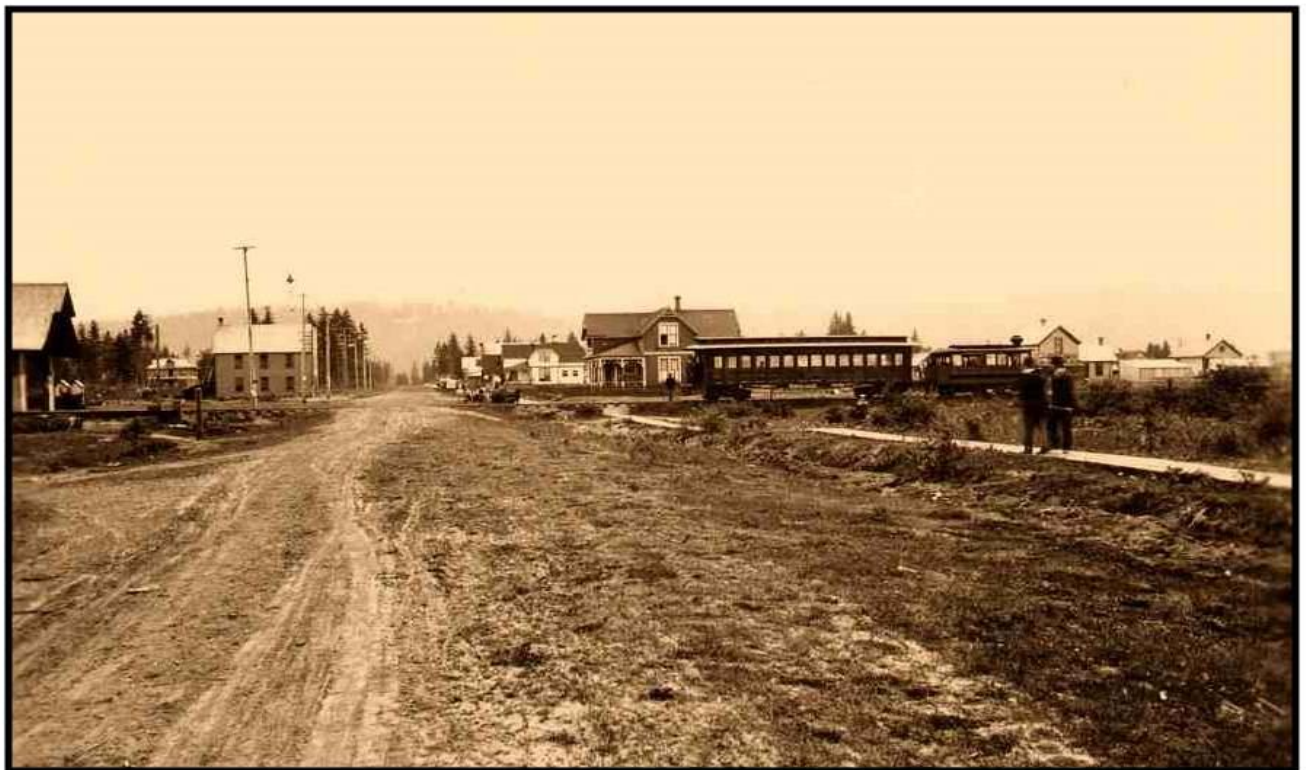
The owners of the Linnton Pool Hall, McDermid & Bell, published post cards in St. Johns.

Located four and a half miles downstream on the Willamette River from Portland's Steel Bridge, St. Johns was settled on the slopes above the Willamette to the high plateau between the Columbia and Willamette Rivers about 1850.

In 1841, James John set out across the plains to California with General John Bidwell. John came to Oregon in 1843 and settled at Linnton. Several years later, he moved to the site of the town that bears his name. He began operating a ferry there in 1852. The original plat for the town of St. Johns was filed on July 20, 1865 and the St. Johns Post Office opened in 1873.

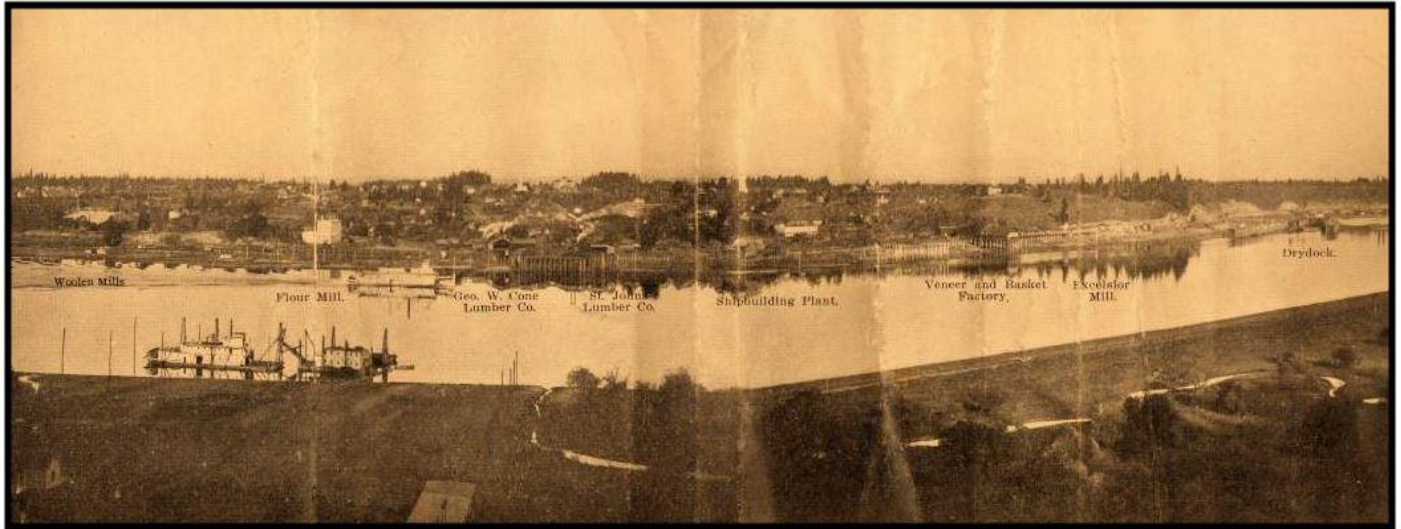


The James John Ferry navigates the Willamette River into the ferry landing.

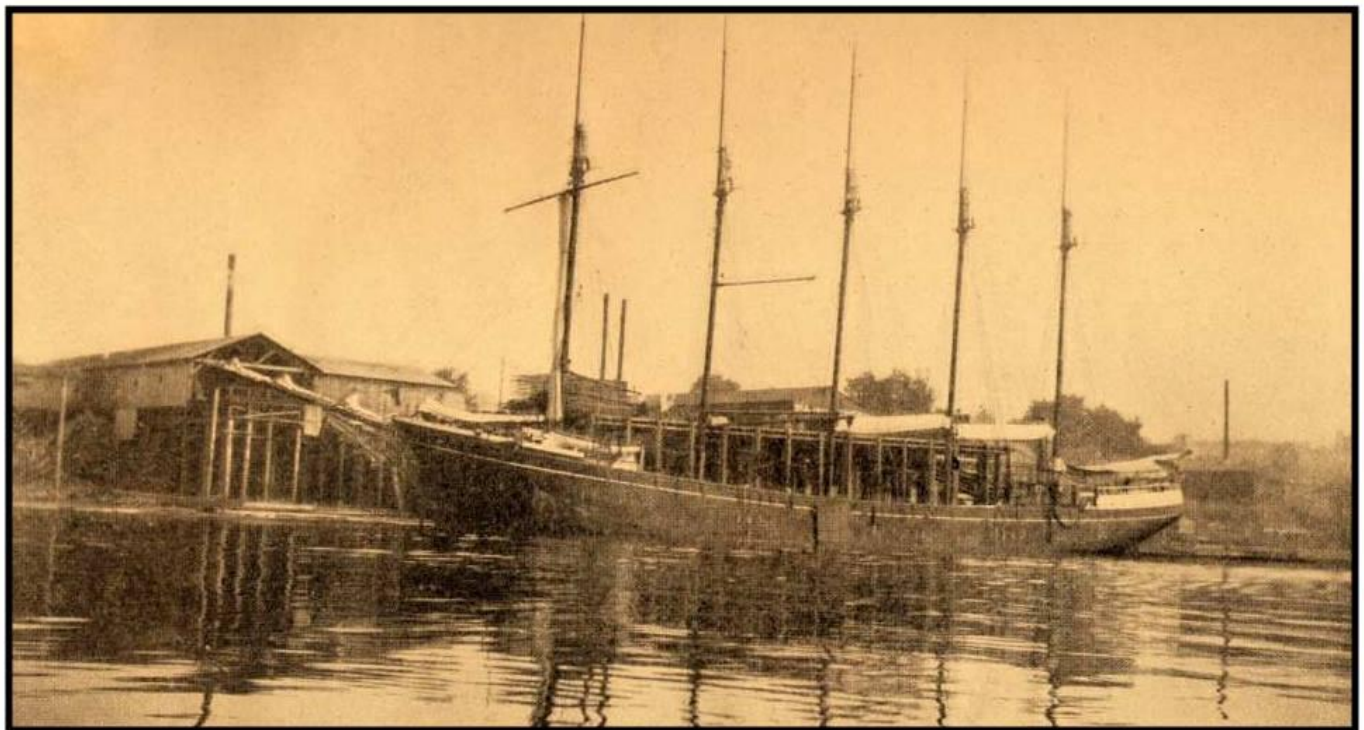


Passenger trains with steam engines began serving Portsmouth in 1889 and then St. Johns in 1890. They connected with the Portland and Vancouver Railway at the Killingsworth Transfer Station. In 1903, the St. Johns line was electrified.

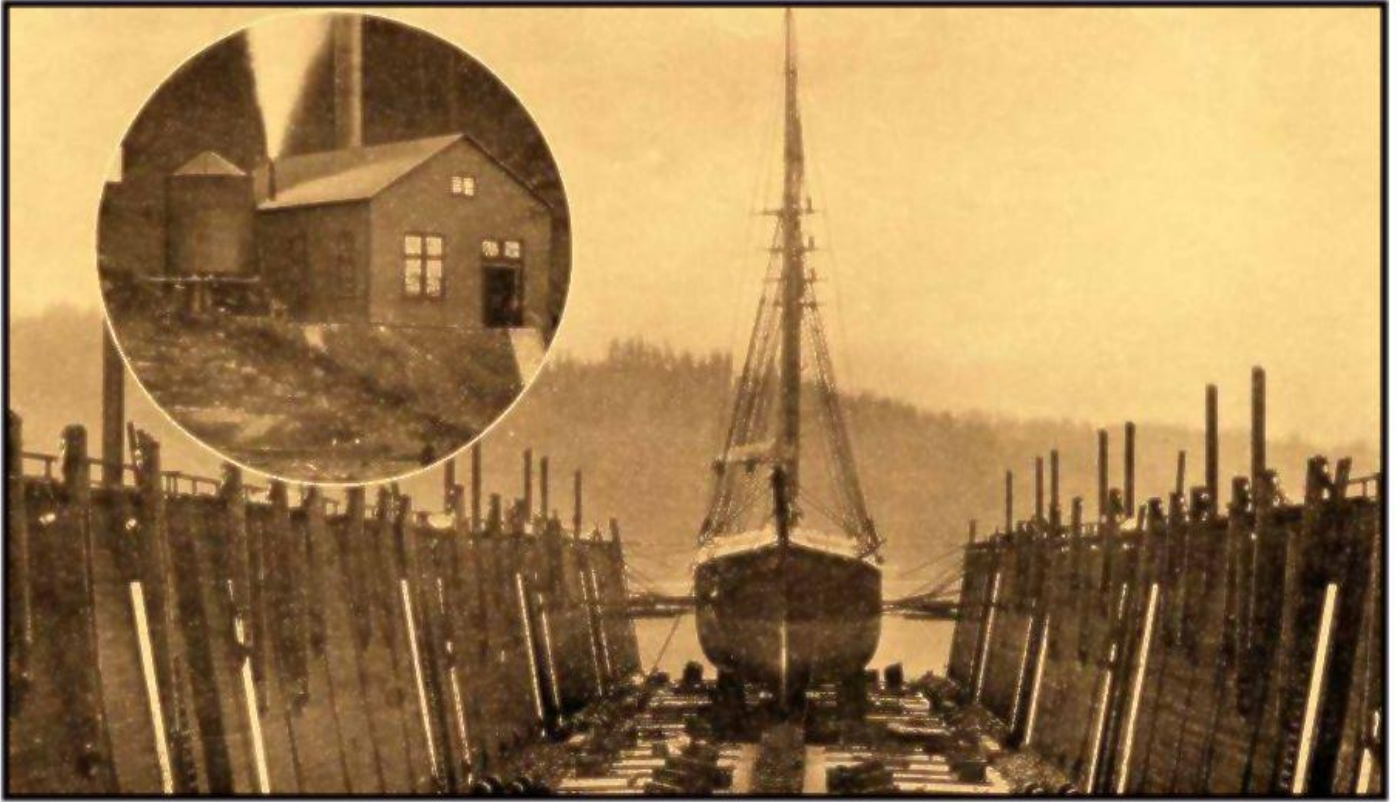
James John died in 1886 and St. Johns became a sleepy little town with a few residents and no industries. Everything began to change in 1902 when the Oregon Railway and Navigation Company saw an opportunity to extend the rail line from Portland to St. Johns. The OR&N thought St. Johns would be a natural site for manufacturing and other industries. By connecting their rail lines to the marine facilities that were already there, profits from commercial opportunities could be fairly handsome from numerous industries and manufacturing customers who would need their line to haul incoming and outgoing goods and materials.



By 1904, St. Johns was home to the Portland Woolen Mills, the Jobses Flour Mill, the George W. Cone Lumber Company, the St. Johns Lumber Company which was owned by A.S. Douglas & Sons, a shipbuilding plant, Portland Manufacturing Company's Veneer & Basket Factory, the Excelsior Mill as well as a drydock.



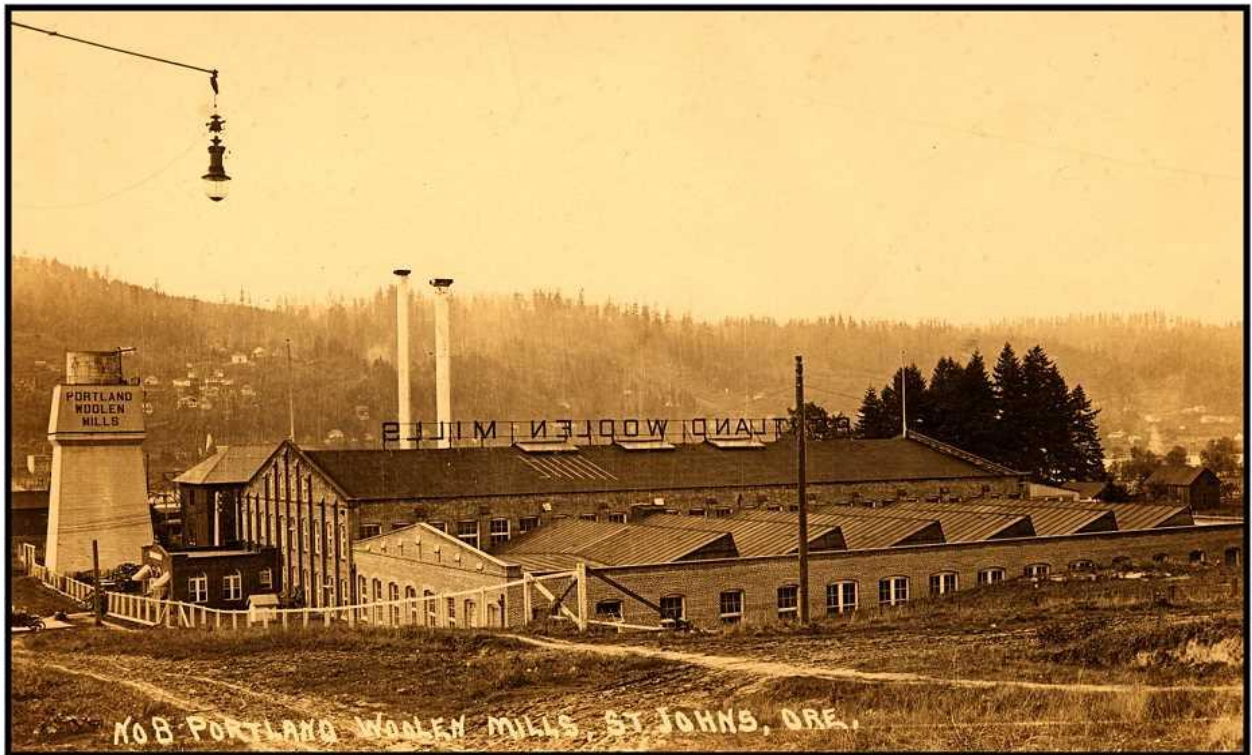
Lumber from the George W. Cone Lumber Company is being loaded onto a sailing ship for export.



The St. Johns Drydock is shown with an inset photo of the powerhouse. St. Johns had two shipbuilding plants, one for building and repairing wooden vessels and one for building and repairing steel ships.



M.V. Jobes & Sons, formerly owners of the Inland Empire Milling Company of Spokane, moved to St. Johns and established a flour mill.

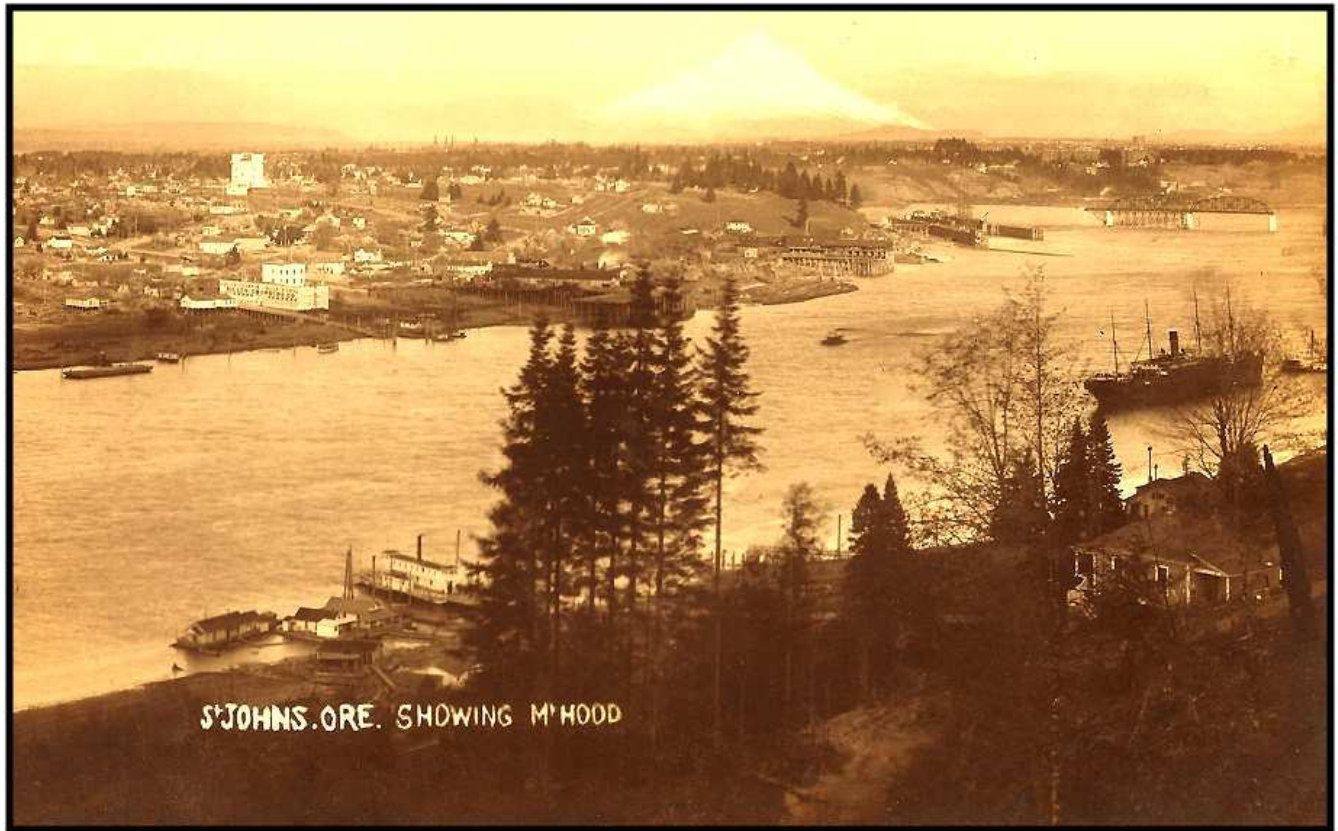


After a disastrous fire in February 1904, Portland Woolen Mills, which was located in Sellwood, built a brand new plant in St. Johns.



A view of St. Johns looking northeast to Mt. St. Helens.

The town of St. Johns was incorporated in 1902 and it was annexed into Portland in 1915.



The view from Linnton toward St. Johns and Mt. Hood to the east.

**WEBFOOTERS POST CARD CLUB
2014 ANTIQUE PAPER AUCTIONS ♦ SHOW ♦ SALE**

★★★

ORAL AUCTION & BANQUET

FRIDAY, APRIL 25

AUCTION PREVIEW AT 4:00 PM ★ BANQUET DINNER AT 5:30 PM ★ ORAL
AUCTION BEGINS AT 7:00 PM

**THE GROTTO CONFERENCE CENTER, 8840 NE SKIDMORE
ST**

DINNER \$17.00 PER PERSON ★ RESERVATIONS BY APRIL 21—503-901-0505 OR
cbessw@aol.com

★★★

**ANTIQUÉ PAPER SHOW & SALE
& SILENT AUCTION**

SAT. & SUN. APRIL 26 & 27

KLIEVER ARMORY, 10000 NE 33rd DRIVE, PORTLAND OR 97211
SATURDAY 10 AM—5 PM ★ SUNDAY 10 AM—4 PM ★ FREE ADMISSION ★ FREE
PARKING ★ SNACK BAR

SILENT AUCTION FIRST CLOSING SUNDAY 2:00 PM